

**Unit 8 – Intro to Inverse Functions**

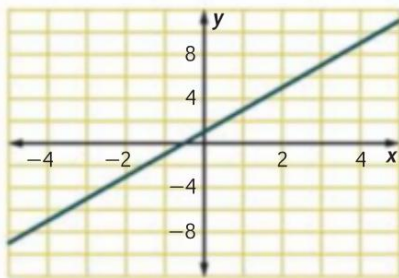
1. What is the domain and range of the following functions? Does the function have an inverse? Explain.

a.  $\{(-1,2),(-2,0),(5,-1),(3,2)\}$

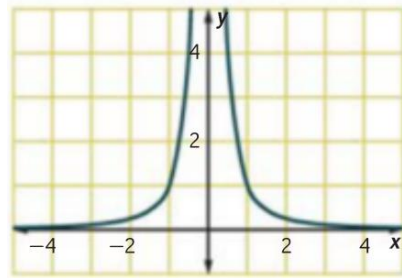
b.  $\{(1,2),(-2,-1),(-4,-3),(3,4),(0,1)\}$

2. For each graph, determine if the function has an inverse. If not, adjust the domain so that there is an inverse.

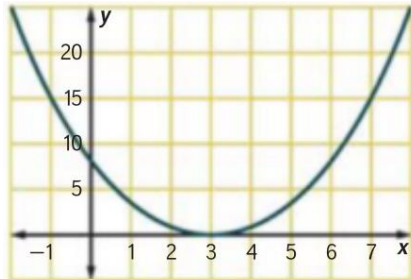
a.



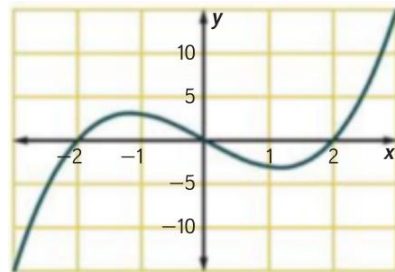
b.



c.



d.



Name \_\_\_\_\_ Hour \_\_\_\_\_

3. Describe in words how to solve for  $x$ . Do NOT solve.

a.  $y = 3x$

b.  $y = -6x + 5$

c.  $y = 3x - 7$

d.  $y = \frac{3}{9}x + 4$

e.  $y = mx + b$